



# LG LED TV

**1 Year Warranty**

## 32LK500BPTA



32 inches (LED)  
1366x768(HD)  
100-240V/55W  
D(723.9)xW(177.8)xH(482.6)mm  
Dolby Audio, USB movie,  
DVB-T2, 2.0 Speaker  
Component AV, HDMIx2,  
USB, Antenna

**299,000Ks**

## 32LK540BPTA



32 inches (LED)  
1366x768(HD)  
100-240V/55W  
D(723.9)xW(217.8)xH(482.6)mm  
Smart TV, Screen Share, DVB-T2,  
USBx1, Virtual Surround Plus,  
Dynamic Color, Active HDR  
Component/AV, HDMIx2, USBx1,  
Antenna, Optical Output, LAN

**389,000Ks**

## 43LK5400PTA



43 inches (LED)  
1920x1080 (FHD)  
100-240V  
D(82.3)xW(968)xH(569)mm  
Smart TV, Screen Share, DVB-T2,  
Virtual Surround Plus Audio, Wifi,  
Web Browser, Active HDR  
HDMIx2, USBx1, LAN, Antenna,  
Optical Output

**599,000Ks**

# PANASONIC LED TV

**1+2 Years Warranty**

## TH-32F400S



32Inches (IPS LED)  
1366x768 (HD)  
220-240V/155W  
"D(733)xW(437)xH(70)mm W/O Stand  
W Stand D(733)x W(476)xH(179)mm"  
DVB-T2, Dolby Audio, Clear Resolution  
HDMIx2, USBx1, Antenna,  
Digital Audio Out

**269,000Ks**

## TH-32FS500S



32Inches (IPS LED)  
1366x768 (HD)  
220-240V  
D(733)xW(437)xH(70)mm  
Smart TV, YouTube, DVB-T2,  
Screen Mirroring, Dolby Audio,  
Web Browser,  
HDMIx2, USBx1, LAN , Antenna,  
Digital Audio Out

**379,000Ks**

## TH-40FS500S



40 inches (LED)  
1366x768 (HD)  
220-240V/ 60W  
D(902)xW(569.7)xH(238)mm W/O Stand  
W Stand D(902)x W(569.7)xH(238)mm  
Smart TV, YouTube, DVB-T2, Web Browser  
Screen Mirroring, Dolby Audio  
HDMIx3, USBx2, AV in, LAN, Antenna,  
LANx1 , Digital Audio Out, Audio Out

**579,000Ks**

# HISENSE LED TV

**1 Year Warranty**

## 32A5601HW



32 inches ( LED)  
1366x768 (HD)  
100-240V/ 50W  
D(736.6)xW(152.4)xH(482.6)mm  
Smart TV, Screen Mirroring, DVB-T2,  
Brower, YouTube, Netflix, Any View Cast  
HDMIx3, USBx2, AV input Antenna, LAN,  
Antenna, Digital Audio output,  
Optical Component

**259,000Ks**

## H40N2179PW



40 inches ( LED)  
1920x1080 (FHD)  
100-240V/ 70W  
D(208)xW(903)xH(563)mm  
Smart TV, Screen Mirroring, DVB-T2,  
TV Brower, YouTube, Netflix,  
Any View Cast  
HDMIx3, USBx2, AV input Antenna,  
LAN , Antenna, Digital Audio output,  
Optical Component

**349,000Ks**

## 43N2170PW



43 inches ( LED)  
1920x1080 (FHD)  
100-240V/ 75W  
D(1005)xW(140)xH(635)mm  
Smart TV, Screen Mirroring, DVB-T2,  
USB Brower, YouTube  
HDMIx3, USBx2, AV input Antenna,  
LAN , Antenna, Digital Audio output,  
Optical Component

**409,000Ks**

# SAMSUNG Washing Maching

**1 Year Warranty**



## WA75H4000SG/ST

Fully Auto  
7.5 Kg  
220V-240V  
W(610)xD(679)xH (1075)  
Diamond Drum  
Magic Filter

**289,000Ks**



## WA90M511OSG

Fully Auto  
9 Kg  
220V-240V  
W(610)xD(968)xH (654)  
Diamond Drum  
Magic Filter, Air Turbo,  
Double Storm

**354,000Ks**



## WA10J5713SG/ST

Fully Auto  
10 Kg  
220V-240V  
W(610)xD(679)xH (1075)  
Diamond Drum  
Active Dual Wash, Magic Dispenser,  
Magic Filter, Dubble Storm

**412,000Ks**

# LG Washing Maching

**1 Year Warranty**



## WP900R

Semi Auto  
9Kg  
220V-240V  
W(805)xD(478)xH(975)  
Wind Jet Dry

**249,000Ks**



## T2109VS2M7

Fully Auto  
9Kg  
220V-240V/50Hz  
W(580)xD(590)xH(968)  
Turbo Drum  
Auto Restart, Auto Power Off,  
Beeper, Digital Smart Interiver

**399,000Ks**



## T2311VSAM

Fully Auto  
11.0Kg  
220V-240V/50Hz  
W(590)xD(606)xH(960)  
Turbo Drum  
Inventer Technology, Auto Restart,  
Air Dry, Beeper

**469,000Ks**

# PANASONIC Washing Maching

**1 Year Warranty**

# HITACHI Washing Maching



## NA-F80B5

Fully Auto  
8.0 Kg  
220V-240V/50Hz  
W(595)xD(641)xH(995)  
Stainless Steel  
Auto Power Off, Child Lock,  
Water Saving, Air Dry,  
Spin Speed (RPW),720rpm

**325,000Ks**



## NA-F90B5

Fully Auto  
9.0 Kg  
220V-240V  
W(598)xD(641)xH(995)  
SAZANA MI Drum  
Water Saving, Baby Care,  
Air Dry(90min),Tub Hyglene,  
Energy Saving with  
Auto Power Off, Child Lock

**348,000Ks**



## PS-T700BJ

Semi Auto  
7Kg  
220V-240V  
W(630)xD(715)xH(1050)  
Beat Wave Wash

**299,000Ks**

# HITACHI Washing Maching

**1 Year Warranty**



## SF-S85XC

Fully Auto  
8.5 Kg  
220V-240V  
W(590)xD(600)xH(1002)  
Stainless Steel  
Beat Wave Wash  
Step Wash, Child Lock,  
Energy Saving

**469,000Ks**



## SF-100XA

Fully Auto  
10 Kg  
220V-240V  
W(590)xD(634)xH(1008) mm  
Beat Wave Wash

**565,000Ks**



## SF-130XWV

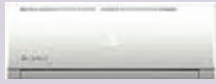
Fully Auto  
13 Kg  
220V-240V  
W(640)xD(696)xH(1040)mm  
Beat Wave Wash  
Auto Self Clean, Auto Restart,  
Auto Power Off/11 Washing Program

**859,000Ks**

# CHIGO Air Con

**2+2 Years Warranty**

## CS-25A-1C170P



1HP  
Split  
1100W  
805W (Cooling Power)  
220-240V/50Hz  
Non-Inverter, Energy Saving,  
Strong Cooling, Easy Clean Turbo,  
Panasonic Compressor  
R410a

**341,000Ks**

## CS-35A-1B170P



1.5 HP  
Split  
1500W  
1150W (Cooling Power)  
220-240V/50Hz  
Non-Inverter, Strong Cooling,  
Easy Clean Turbo,  
Panasonic Compressor  
R410a

**391,000Ks**

## CS-25V-1C174



1.0 HP  
Split  
1200W  
140W-1320W (Cooling Power)  
220-240V/50Hz  
Inverter, Energy Saving,  
Strong Cooling, Easy Clean Turbo,  
Low Noise  
R410a

**440,000Ks**

# SAMSUNG Air Con

**1 Year Warranty**

## AR12KCFHDWKNV



1.5 HP  
Split  
1125W/820W  
220-240V  
Non-Inverter, Power Saving,  
Automatic Cleaning,  
Antibacterial Filter Mode,

**365,000Ks**

## AR12JCFSTWKNV



1.5 HP  
Split  
1125W/820W  
220-240V  
Non-Inverter, Low Voltage Control  
Control Air-CORROSION DURAFIN

**379,000Ks**

## AR10KVFNAWKNUN



1 HP  
Split  
1120W/860W  
220-240V  
Digital Inverter,  
Low Voltage  
Control Air-CORROSION DURAFIN

**474,000Ks**

# SAMSUNG Air Con

# MITSUBISHI Air Con

**1 Year Warranty**

## AR13KVFNAWKNUN



1.5 HP  
Split  
1120W/860W  
220-240V  
Digital Inverter, Low Voltage  
Control Air-CORROSION DURAFIN

**559,000Ks**

## MSYGH10



1HP  
Split  
870W  
220-240V/50Hz  
Easy Clean, Anti-Allergy,  
Enzyme Filter, I save Move,  
Inverter

**763,000Ks**

## MSYGH13



1.5 HP  
Split  
980W  
220-240V/50Hz  
Easy Clean, Anti-Allergy,  
Enzyme Filter, I save Move,  
Inverter

**899,000Ks**

# MITSUBISHI Air Con

**1 Year Warranty**

# PANASONIC Refrigerator

## MS-GF13/MS-GF10



1.5 HP/1HP  
Split  
1290W/900W  
220-240V/50Hz  
Easy Clean, Anti-Allergy,  
Enzyme Filter,  
I save Move, Non-Inverter

**1.5HP 578,000Ks**  
**1.0HP 493,000Ks**

## MS-HM13/MS-HM10



1.5 HP/1HP  
Split  
1140W/900W  
220-240V/50Hz  
Easy Clean, Anti-Allergy,  
Enzyme Filter, I save Move,  
Non-Inverter

**1.5HP 601,000Ks**  
**1.0HP 518,000Ks**

## NR-BX468X



450 Liters  
(W)680x(D)634x (H)1768mm  
161-192W  
ECONAVI/Inverter, Bottom, Freezer  
Temperature Control, Ag Clean,  
Ice Twister, Egg Tray R 600a Gas

**1,139,000Ks**

# PANASONIC Refrigerator

**1 Year Warranty**



## NR-BT228

222 Liters  
(W)550x(D)1390x (H)600  
220-240V/50Hz  
Temperature control, Cold air Control  
Ice Tray/Box Foods Stored,  
Energy Saving

**509,000Ks**



## NR-BL268

262 Liters  
(W)550x(D)1390x (H)600  
220-240V/50Hz  
Temperature control, Cold air Control  
Ice Tray/Box Foods Stored,  
Energy Saving

**569,000Ks**



## NR-BX418VSWA

407 Liters  
(W)685x(D)698x (H)1624  
220-240V/50Hz  
ECONAVI/Inverter, Ag Clean  
(Anti Bacterial & Deodorizer),  
ICE Twister, Meat Box, Quick Freezing

**939,000Ks**

# LG Refrigerator

**1 Year Warranty**



## GNY331SLBB

199 Liters  
(W)525x(D)555x (H)1295  
220/50Hz  
Smart Inverter Compressor,  
Temperature Control, Defrost,  
Egg Tray, Tempered Glass Shelf

**329,000Ks**



## GNB202SQBB

205 Liters  
(W)555x(D)585x (H)1400  
220-240V  
Smart Inverter Compressor, Moist Balance Crisper,  
Multi Air Flow, Pull Out Tray, Movint Ice Tray,  
LED Lighting, Temper Glass, Total No Frost

**389,000Ks**



## GNB272SQCB

444 Liters  
(W)700x(D)700x (H)1850  
220  
Linear Compressor, Moist Balance Crisper,  
Multi Air Flow, Temper Glass, Total No Frost,  
Folding Self, Pull-Out Tray, Twist Ice Tray,  
Changeable Door

**519,000Ks**

# HISENSE Refrigerator

**1+2 Years Warranty**



## RD-16DR4SA

120 Liters  
(W)530x(D)551x (H)1247  
220-240V  
A+ Energy Saving, Temperature Control,  
LED Lighting, Colour Panel, Double Handle,  
Optional, Low Noise, Adjustable

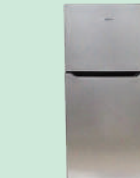
**223,000Ks**



## RS-23DR4HA

175 Liters  
(W)542x(D)565x (H)1332  
220-240V  
Tempered Control, Easy Stick,  
Defrost, System, Vegetable Box

**233,000Ks**



## RD-17DR4SHA

132Liters  
(W)490x(D)500x (H)1300  
70-110W  
Temperature Control, Temperature Glass  
Vegetable Box

**229,000Ks**

# DELL LAPTOP

**Vostro 5481(i7)**

- ▶ Intel@ Core TM i7-8565U 1.8GHz
- ▶ 8GB DDR4 2400MHz
- ▶ SSD 128GB + 1TB SATA 5400rpm
- ▶ NVIDIA @ Geforce MX130 2GB DDR5
- ▶ 14.0" FHD LED LCD (1920x1080)
- ▶ Bluetooth, Web Camera, Card Reader
- ▶ Wireless LAN (AC), GbLAN, HDMI, USB 3.0, Type C
- ▶ 4-Cells Li-Ion Battery
- ▶ Weight: 2.4Kg

**\$919.00**

**Inspiron 5583 (i7)**

- ▶ Intel@ Core TM i7-8565 1.8GHz
- ▶ 8GB DDR4 2666 Mhz
- ▶ 256GB SSD M2
- ▶ NVIDIA @ Geforce MX130 4GB DDR5
- ▶ 15.6" FHD LED LCD (1920x1080)
- ▶ DVD Writer Super Multi DL
- ▶ Bluetooth, Web Camera, Card Reader
- ▶ Wireless LAN (N), LAN, HDMI, USB 3.0
- ▶ 4-Cells Li-Ion Battery
- ▶ Weight: 2.4Kg

**\$879.00**

**Inspiron 3476 (i7)**

- ▶ Intel@ Core TM i7-8550 1.8GHz
- ▶ 8GB DDR4 2400 Mhz
- ▶ 1TB SATA 5400 rpm
- ▶ AMD Radeon TM M520 2GB DDR5
- ▶ 14.0" HD LED LCD (1366x768)
- ▶ DVD Writer Super Multi DL
- ▶ Bluetooth, Web Camera, Card Reader
- ▶ Wireless LAN (AC), LAN, HDMI, USB 3.0
- ▶ 4-Cells Li-thium Battery
- ▶ Weight: 2.1Kg

**\$719.00**

**Inspiron 5583 (i5)**

- ▶ Intel@ Core TM i5-826 1.6GHz
- ▶ 4GB DDR4 2666 Mhz
- ▶ 1TB SATA 5400 rpm
- ▶ NVIDIA @ Geforce TM MX130 2GB DDR5
- ▶ 15.6" HD LED LCD (1366x768)
- ▶ DVD Writer Super Multi DL
- ▶ Bluetooth, Web Camera, Card Reader
- ▶ Wireless LAN (N), LAN, HDMI, USB 3.0
- ▶ 3-Cells Li-Ion Battery
- ▶ Weight: 2.1Kg

**\$699.00**

**Inspiron 3580 (i5)**

- ▶ Intel@ Core TM i5-8265 1.8GHz
- ▶ 4GB DDR4 2667 Mhz
- ▶ 1TB SATA 5400 rpm
- ▶ AMD Radeon TM 520 2GB DDR5
- ▶ 15.6" FHD LED LCD (1920x1080)
- ▶ DVD Writer Super Multi DL
- ▶ Bluetooth, Web Camera, Card Reader
- ▶ Wireless LAN (AC), GbLAN, HDMI, USB 3.0, Type C
- ▶ 4-Cells Li-Ion Battery
- ▶ Weight: 2.1Kg

**\$639.00**

**Inspiron 3480 (i5)**

- ▶ Intel@ Core TM i7-8265 1.6GHz
- ▶ 4GB DDR4 2400 Mhz
- ▶ 1TB SATA 5400 rpm
- ▶ AMD Radeon TM M520 2GB DDR5
- ▶ 14.0" HD LED LCD (1366x768)
- ▶ Bluetooth, Web Camera, Card Reader
- ▶ Wireless LAN (AC), LAN, HDMI, USB 3.0
- ▶ 4-Cells Li-Ion Battery
- ▶ Weight: 2.1Kg

**\$619.00**

**Inspiron 3581 (i3)**

- ▶ Intel@ Core TM i3-7020U 2.3GHz
- ▶ 4GB DDR4 2667 Mhz
- ▶ 1TB SATA 5400 rpm
- ▶ AMD Radeon TM R520 2GB DDR5
- ▶ 15.6" FHD LED LCD (1920x1080)
- ▶ DVD Writer Super Multi DL
- ▶ Bluetooth, Web Camera, Card Reader
- ▶ Wireless LAN (AC), LAN, HDMI, USB 3.0
- ▶ 3-Cells Li-Ion Battery
- ▶ Weight: 2.4Kg

**\$459.00**

**Inspiron 3481 (i3)**

- ▶ Intel@ Core TM i3-7020U 2.3GHz
- ▶ 4GB DDR4 2666 Mhz
- ▶ 1TB SATA 5400 rpm
- ▶ AMD Radeon TM R520 2GB DDR5
- ▶ 14.0" HD LED LCD (1366x768)
- ▶ Bluetooth, Web Camera, Card Reader
- ▶ Wireless LAN (N), LAN, HDMI, USB 3.0
- ▶ 3-Cells Li-Ion Battery
- ▶ Weight: 2.4Kg

**\$449.00**

# HP LAPTOP

**HP 14-ck0002TU (Cel)**

- ▶ Intel@ Celeron N4000 1.8GHz
- ▶ 4GB DDR4 2400 Mhz
- ▶ 500GB SATA 5400 rpm
- ▶ Intel HD Graphics
- ▶ 14.0" HD LED LCD (1366x768)
- ▶ Bluetooth, Web Camera, Card Reader
- ▶ Wireless LAN (AC), GbLAN, HDMI, USB 3.1
- ▶ 2-Cells Li-Ion Battery
- ▶ Weight: 2.4Kg

**\$319.00**

**HP 15-da0064TX (i3)**

- ▶ Intel@ Core TM i3-7020U 2.3GHz
- ▶ 4GB DDR4 2400 Mhz
- ▶ 1TB SATA 5400 rpm
- ▶ NVIDIA @ Geforce MX100 2GB DDR5
- ▶ 15.6" HD LED LCD (1366x768)
- ▶ DVD Writer Super Multi DL
- ▶ Bluetooth, Web Camera, Card Reader
- ▶ Wireless LAN (AC), GbLAN, HDMI, USB 3.0/2.0
- ▶ 3-Cells Li-Ion Battery
- ▶ Weight: 2.1Kg

**\$459.00**

**HP 15-da1068, 1069TX (i5)**

- ▶ Intel@ Core TM i5-8265U 1.6GHz
- ▶ 4GB DDR4 2400 Mhz
- ▶ 1TB SATA 5400 rpm
- ▶ NVIDIA @ Geforce MX110 2GB DDR5
- ▶ 15.6" HD LED LCD (1366x768)
- ▶ DVD Writer Super Multi DL
- ▶ Bluetooth, Web Camera, Card Reader
- ▶ Wireless LAN (AC), GbLAN, HDMI, USB 3.0
- ▶ 3-Cells Li-Ion Battery
- ▶ Weight: 2.1Kg

**\$620.00**

**HP Pavilion15 c2062TX (i5)**

- ▶ Intel@ Core TM i5-8265U 1.6GHz
- ▶ 4GB DDR4 2400 Mhz
- ▶ 1TB SATA 5400 rpm
- ▶ NVIDIA @ Geforce MX250 2GB DDR5
- ▶ 15.6" HD LED LCD (1920x1080)
- ▶ Bluetooth, Web Camera, Card Reader
- ▶ Wireless LAN (AC), GbLAN, HDMI, USB 3.0
- ▶ 3-Cells Li-Ion Battery
- ▶ Weight: 2.1Kg

**\$689.00**

# ASUS LAPTOP

**X540MA-GQ092/094T(Cel)**

- ▶ Intel@ Celeron N4000 1.1GHz
- ▶ 4GB DDR4 2400 Mhz
- ▶ 1TB SATA 5400 rpm
- ▶ Intel® HD Graphics
- ▶ 15.6" HD LED LCD (1366x768)
- ▶ DVD Writer Super Multi DL
- ▶ Bluetooth, Web Camera, Card Reader
- ▶ Wireless LAN (N), HDMI, USB 3.0
- ▶ 3-Cells Li-Ion Battery
- ▶ Weight: 2.0Kg

**\$ 319.00**

**X540UA-GQ798/830T(i3)**

- ▶ Intel@ CoreTM i3-7020U 2.3GHz
- ▶ 4GB DDR4 2133 Mhz
- ▶ 1TB SATA 5400 rpm
- ▶ Intel® HD Graphics
- ▶ 15.6" HD LED LCD (1366x768)
- ▶ DVD Writer Super Multi DL
- ▶ Bluetooth, Web Camera, Card Reader
- ▶ Wireless LAN (N), HDMI, USB 3.0/2.0
- ▶ 3-Cells Li-Ion Battery
- ▶ Weight: 2.0Kg

**\$ 389.00**

**X540UB-GQ1237/1238(i3)**

- ▶ Intel@ CoreTM i3-7020U 2.2GHz
- ▶ 4GB DDR4 2133 Mhz
- ▶ 1TB SATA 5400 rpm
- ▶ NVIDIA @ Geforce MX110 2GB DDR5
- ▶ 15.6" HD LED LCD (1366x768)
- ▶ DVD Writer Super Multi DL
- ▶ Bluetooth, Web Camera, Card Reader
- ▶ Wireless LAN (AC), HDMI, USB 3.0
- ▶ 3-Cells Li-Ion Battery
- ▶ Weight: 2.0Kg

**\$ 429.00**

**X509FJ-EJ095/096T(i3)**

- ▶ Intel@ CoreTM i3-8145U 2.1GHz
- ▶ 4GB DDR4 2400 Mhz
- ▶ 1TB SATA 5400 rpm
- ▶ NVIDIA @ Geforce MX230 2GB DDR5
- ▶ 15.6" HD LED LCD (1920x1080)
- ▶ Bluetooth, Web Camera, Card Reader
- ▶ Wireless LAN (AC), HDMI, USB 3.0
- ▶ 2-Cells Li-Polymer Battery
- ▶ Weight: 2.0Kg

**\$ 519.00**

# LENOVO LAPTOP

**V130 (Cel)**

- ▶ Intel@ Celeron N3865 1.8GHz
- ▶ 4GB DDR4 2133 Mhz
- ▶ 1TB SATA 5400 rpm
- ▶ Intel® HD Graphics
- ▶ 15.6" HD LED LCD (1366x768)
- ▶ DVD Writer Super Multi DL
- ▶ Bluetooth, Web Camera, Card Reader
- ▶ Wireless LAN (N), LAN, HDMI, USB 2.0
- ▶ 2-Cells Li-Po Battery
- ▶ Weight: 2.4Kg

**\$279.00**

**Ideapad 330 (Cel)**

- ▶ Intel@ Celeron N4000 1.1GHz
- ▶ 4GB DDR4 2400 Mhz
- ▶ 1TB SATA 5400 rpm
- ▶ Intel® HD Graphics
- ▶ 14.0" HD LED LCD (1366x768)
- ▶ DVD Writer Super Multi DL
- ▶ Bluetooth, Web Camera, Card Reader
- ▶ Wireless LAN (AC), LAN, HDMI, USB 2.0
- ▶ 2-Cells Li-Po Battery
- ▶ Weight: 2.1Kg

**\$314.00**

**Ideapad 330 (i3)**

- ▶ Intel@ Core TM i3-7020U 2.3GHz
- ▶ 4GB DDR4 2133 Mhz
- ▶ 1TB SATA 5400 rpm
- ▶ Intel® HD Graphics
- ▶ 14.0" HD LED LCD (1366x768)
- ▶ DVD Writer Super Multi DL
- ▶ Bluetooth, Web Camera, Card Reader
- ▶ Wireless LAN (N), GbLAN, HDMI, USB 2.0, Type-C
- ▶ 2-Cells Li-Po Battery
- ▶ Weight: 2.4Kg

**\$399.00**

**Ideapad 330 (i3)**

- ▶ Intel@ Core TM i3-7020U 2.3GHz
- ▶ 4GB DDR4 2133 Mhz
- ▶ 1TB SATA 5400 rpm
- ▶ AMD Radeon TM R530 2GB DDR5
- ▶ 14.0" HD LED LCD (1366x768)
- ▶ DVD Writer Super Multi DL
- ▶ Bluetooth, Web Camera, Card Reader
- ▶ Wireless LAN (N), GbLAN, HDMI, USB 2.0
- ▶ 2-Cells Li-Po Battery
- ▶ Weight: 2.4Kg

**\$429.00**

**Ideapad 330 (i5)**

- ▶ Intel@ CoreTM i5-8250U 1.6GHz
- ▶ 4GB DDR4 2133 Mhz
- ▶ 1TB SATA 5400 rpm
- ▶ AMD Radeon TM R530 2GB DDR5
- ▶ 14.0" HD LED LCD (1920x1080)
- ▶ DVD Writer Super Multi DL
- ▶ Bluetooth, Web Camera, Card Reader
- ▶ Wireless LAN (AC), LAN, HDMI, USB 2.0
- ▶ 2-Cells Li-Po Battery
- ▶ Weight: 2.4Kg

**\$569.00**

**Ideapad 330 (i7)**

- ▶ Intel@ Core TM i7-8550U 1.8GHz
- ▶ 4GB DDR4 2133 Mhz
- ▶ 1TB SATA 5400 rpm
- ▶ AMD Radeon TM R530 2GB DDR5
- ▶ 15.6" FHD LED LCD (1366x768)
- ▶ DVD Writer Super Multi DL
- ▶ Bluetooth, Web Camera, Card Reader
- ▶ Wireless LAN, HDMI, USB 2.0, Type C
- ▶ 2-Cells Li-Po Battery
- ▶ Weight: 2.4Kg

**\$709**

**Aspire 3 A314 33 (Cel)**

- ▶ Intel@ Celeron N4000 1.1GHz
- ▶ 4GB DDR4 2400 Mhz
- ▶ 500GB SATA 5400 rpm
- ▶ Intel® HD Graphics 600
- ▶ 14.0" FHD LED LCD (1366x768)
- ▶ DVD Writer Super Multi DL
- ▶ Bluetooth, Web Camera, Card Reader
- ▶ Wireless LAN(AC), GbLAN, HDMI, USB 3.0,
- ▶ 3-Cells Li-Po Battery
- ▶ Weight: 2.1Kg

**\$289.00**

**Aspire 3 A314 33 (Pen)**

- ▶ Intel@ Pentium N5000 1.1GHz
- ▶ 4GB DDR4 2400 Mhz
- ▶ 500GB SATA 5400 rpm
- ▶ Intel® HD Graphics 605
- ▶ 14.0" FHD LED LCD (1366x768)
- ▶ DVD Writer Super Multi DL
- ▶ Bluetooth, Web Camera, Card Reader
- ▶ Wireless LAN(AC), GbLAN, HDMI, USB 3.0,
- ▶ 3-Cells Li-Po Battery
- ▶ Weight: 2.1Kg

**\$339.00**

# ACER LAPTOP

**Aspire A514 (i3)**

- ▶ Intel@ Core TM i3-8145U 2.1GHz
- ▶ 4GB DDR4 2400 Mhz
- ▶ 1TB SATA 5400 rpm
- ▶ Intel® HD Graphics
- ▶ 14.0" FHD LED LCD (1366x768)
- ▶ DVD Writer Super Multi DL
- ▶ Bluetooth, Web Camera, Card Reader
- ▶ Wireless LAN(AC), GbLAN, HDMI, Type-C
- ▶ USB 3.0,
- ▶ 3-Cells Li-Ion Battery
- ▶ Weight: 2.1Kg

**\$449.00**

**Aspire 5G (A514) (i3)**

- ▶ Intel@ CoreTM i3-8145U 2.1GHz
- ▶ 4GB DDR4 2666 Mhz
- ▶ 1TB SATA 5400 rpm
- ▶ NVIDIA @ Geforce MX110 2GB DDR5
- ▶ 14.0" FHD LED LCD (1366x768)
- ▶ DVD Writer Super Multi DL
- ▶ Bluetooth, Web Camera, Card Reader
- ▶ Wireless LAN(AC), GbLAN, HDMI, Type-C
- ▶ 3-Cells Li-Ion Battery
- ▶ Weight: 2.1Kg

**\$519.00**

**Aspire 5G (A514) (i5)**

- ▶ Intel@ Core TM i5-8265U 1.6GHz
- ▶ 4GB DDR4 2666 Mhz
- ▶ 1TB SATA 5400 rpm
- ▶ NVIDIA @ Geforce MX130 2GB DDR5
- ▶ 14.0" FHD LED LCD (1366x768)
- ▶ DVD Writer Super Multi DL
- ▶ Bluetooth, Web Camera, Card Reader
- ▶ Wireless LAN(AC), GbLAN, HDMI, Type-C
- ▶ USB 3.0/2.0
- ▶ 3-Cells Li-Ion Battery
- ▶ Weight: 2.2Kg

**\$589.00**

**Aspire E5-476G (i7)**

- ▶ Intel@ Core TM i7-8550U 1.8GHz
- ▶ 4GB DDR4 2400 Mhz
- ▶ 1TB SATA 5400 rpm
- ▶ NVIDIA @ Geforce MX150 2GB DDR5
- ▶ 14.0" FHD LED LCD (1366x768)
- ▶ DVD Writer Super Multi DL
- ▶ Bluetooth, Web Camera, Card Reader
- ▶ Wireless LAN(AC), GbLAN, HDMI, USB 3.0/2.0
- ▶ 4-Cells Li-Ion Battery
- ▶ Weight: 2.1Kg

**\$689.00**